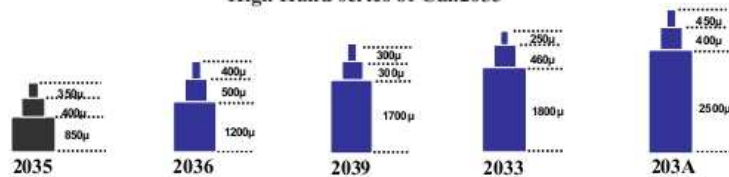


**MIYOTA**

# Cal. 2036/2039/2033/203A

High Hand series of Cal.2035



## 1. Basic Specification

Calibre	2036	2039	2033	203A
Ligne	6-3/4 x 8'''			
Total height	3.15mm			
Hands	3			
Battery life	3 Years			

### < Time Standard >

Type of quartz: Tuning fork type quartz crystal  
 Frequency : 32,768Hz  
 Accuracy : ±20 second / month worn under normal circumstances

### < Battery >

Type of battery: Silver oxide SR626SW or equivalent

### < Others >

Driving system: Two-pole stepping motor  
 Jewel : No jewels

### < Additional Mechanisms >

Second hand stopping at optional position  
 Powercell saving reset mechanism  
 Over-loading compensation device

### < Balanceable weight of hand >

Minute hand Max. 0.4 µN.m  
 Second hand Max. 0.07 µN.m

## 2. Separated Parts

Calibre	2036	2039	2033	203A
Setting stem	065-468			

## 3. Remarks

### < Setting stem >

Length of movement center to stem end : 20.0mm  
 Thread : Φ0.9mm x 12.38mm

### < Measurement of time >

The unit time of measurement must be set at "10s" or integer fold value of 10s owing to the DFC system. And the measurement must be carried out in state of a complete watch.

### < Marking on movement >

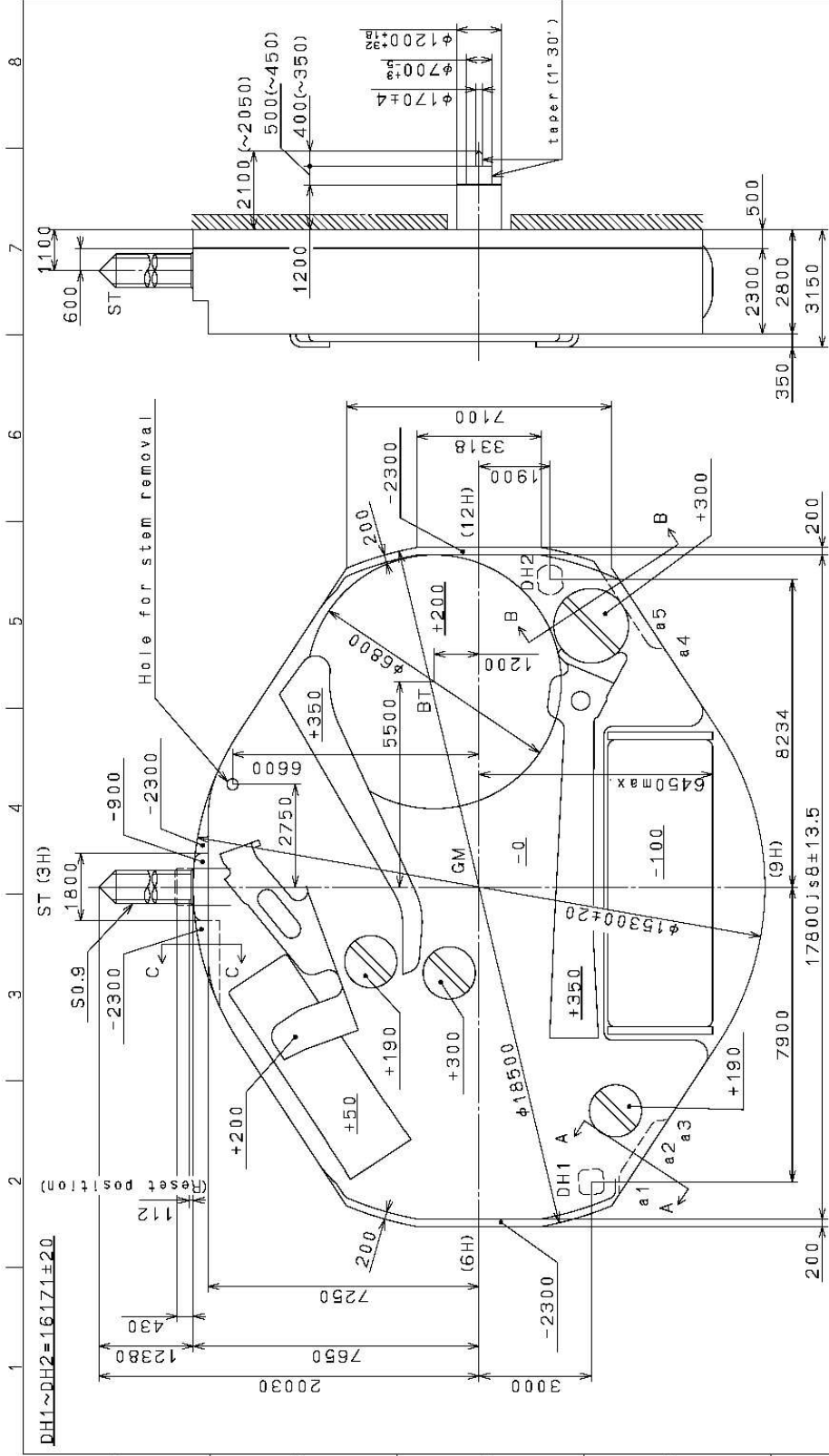
UNADJUSTED  
 (CAL NO.)  
 MIYOTA CO., JAPAN

### < Typical clearance >

Between case and movement  
 Battery strap - Case back : 150 - 300 µ m  
 Hands - glass : 300 - 450 µ m\*

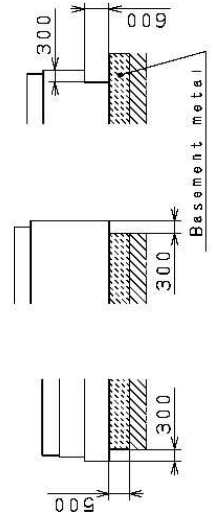
\* Depending and subject to the glass and case structure, and hand length.

**These specifications might be changed without prior notice.**



Coordinates

Mark	X	Y	R
GM	0	0	—
a1	-7838	-4250	500
a2	-6550	-4855	300
a3	-5951	-4888	300
a4	6101	-4790	300
a5	6700	-4766	300



Quantity	1/1000mm	Cal. NO.:	2036
Unit	10:1	Parts No.:	
Scale		Drawn	
Date		Checked	T. Hiruta
Mark		Approved	
Material: Alterations			
Heat Treatment: General Tolerances			
Hardness: Dimensions			
Plating: Finishes			
Name: Frame for Case			
Drawing No.: 2036C001			
<b>MIYOTA</b>			
CITIZEN WATCH CO., LTD. TOKYO, JAPAN			

\*\*\*\*\* **CAL. 2026/36 MOV'T PART LIST** \*\*\*\*\*  
**HIGH HAND**

ORIGINAL PARTS, MADE IN JAPAN

<b>PART NAME</b>	<b>2026</b>	<b>2036</b>
HOUR WHEEL	075-492	075-304
CANON PINION WITH DRIVING WHEEL	028-304	028-135
FORTH WHEEL AND PINION	023-157	023-223

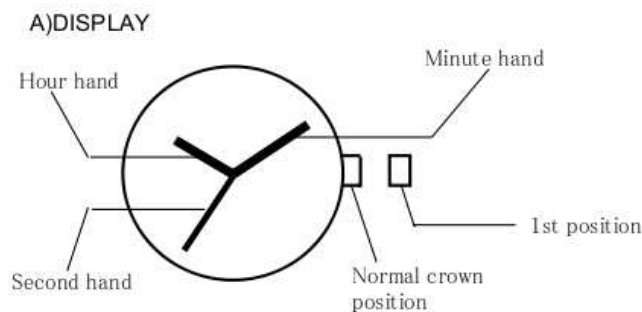
\*Other parts are same as ...  
2025 (=2026)  
2035 (=2036)

**MIYOTA**

**INSTRUCTION MANUAL FOR MIYOTA WATCH MOVEMENT**

BATTERY:

INSTRUCTION MANUAL



B) SETTING THE TIME

1. Pull the crown out to the 1st position.
2. Turn the crown to set hour and minute hands.
3. When the crown is pushed back to the normal position, second hand begins to run.